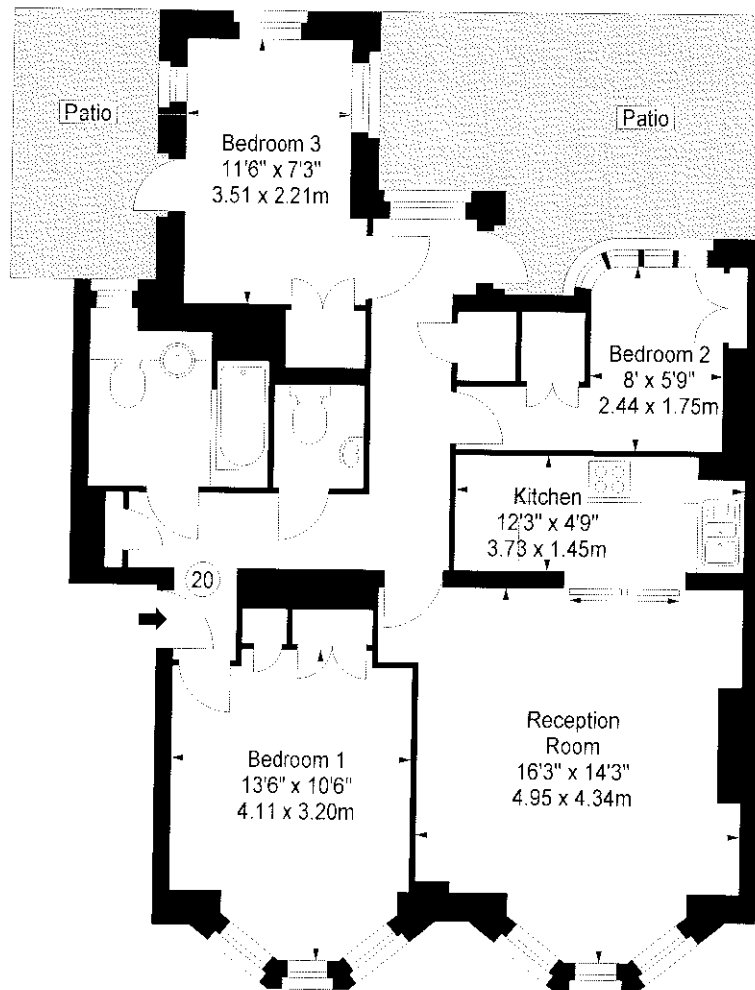


**Flat 20,
Kew Bridge Court, W4**

Approx. Gross Internal Area *
811 Ft² - 75.34 M²



Ground Floor

Illustration For Identification Purposes Only. Not to Scale

*** As Defined by RICS - Code of Measuring Practice**

BKR
FLOORPLANS

(OFFICES THROUGHOUT THE UK)

T: 0845 267 2023
WWW.BKRFLOORPLANS.CO.UK
2067